



## DAMEN MULTI CAT<sup>®</sup> 1506

"ARUS"

### GENERAL

YARD NUMBER	517505
DELIVERY DATE	August 2006
BASIC FUNCTIONS	Towing, pushing and pollution control
CLASSIFICATION	Lloyd's Register * 100 A1 Multi Purpose Boat Specified Coastal Service LMC (without cross)
FLAG	Sudan
OWNER	Sea Ports Corporation, Sudan

### DIMENSIONS

LENGTH O.A.	15.50 m
BEAM O.A.	6.06 m
DEPTH AT SIDES	2.25 m
DRAUGHT AFT	1.80 m
DISPLACEMENT	136 ton

### TANK CAPACITIES

FUEL OIL	7.4 m <sup>3</sup>
BALLAST WATER	10.2 m <sup>3</sup>
FUEL OIL (REC./TRANSPORT)	24.6 m <sup>3</sup>
FRESH WATER	3.2 m <sup>3</sup>
SLUDGE	0.3 m <sup>3</sup>

### PERFORMANCES (TRIALS)

BOLLARD PULL AHEAD	5.1 ton(m)
SPEED	8.5 knots

### PROPULSION SYSTEM

MAIN ENGINES	2x MAN D 2866 TE MD
TOTAL POWER	380 bkW (509 bhp) at 1800 rpm
GEARBOXES	2x Twin Disc
PROPULSION	2x Promarin fixed pitch propellers 1000 mm diameter Kobelt, cable system
ENGINE CONTROL	2x 15 mm single plate
RUDDERS	Hand hydraulic 2x 45°, with rudder position indicator
STEERING GEAR	

### AUXILIARY EQUIPMENT

ELECTRIC SYSTEM	2x 24V 200 Ah, change over facility
ALARM SYSTEM	Engines, gearboxes + bilge alarm/ fire detectors
FLOODLIGHT	150 W on fore deck
BILGE PUMP	Sterling SIHI VW20, 24 m <sup>3</sup> /hr + Deck Hydrant
FUEL OIL SYSTEM	Duplex filters + SOS valve
COOLING SYSTEM	Closed cooling system
FIRE EXTINGUISHER	1x CO <sub>2</sub> and 2x dry powder

### DECK LAY-OUT

ANCHOR	75 kg Pool (High Holding Power)
CHAIN	90 m short link, 13 mm U2 (Class)
ANCHOR WINCH	Rek & Horsman, hand-operated
DECK CRANE	Heila HLM 13-2S, 1.3 ton at 9.0 m, with debris grab (500 L)
OIL SKIMMER	Vikoma Komara 20, 20 ton/hr
OIL BOOM	Vikoma Sentinel 750, 125 m on storage reel
REFUSE SKIP	5 m <sup>3</sup>

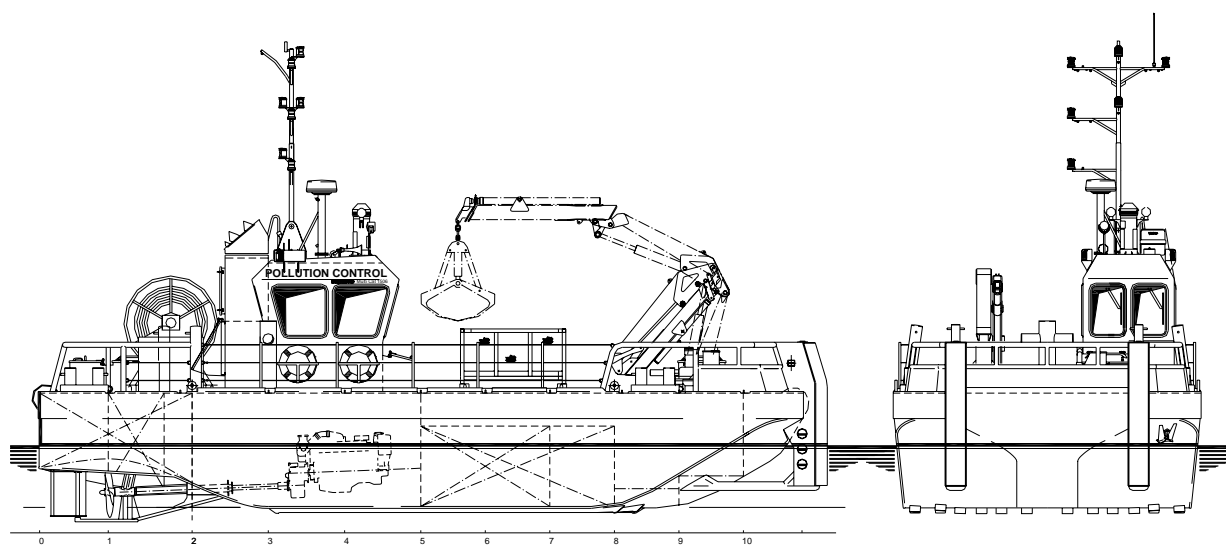
### ACCOMMODATION

The wheelhouse is completely insulated and finished with durable modern linings, acoustical Dampa ceiling, synthetic floor and is equipped with dashboard, time clock, barometer and settee. Windows are fitted in aluminium frames.

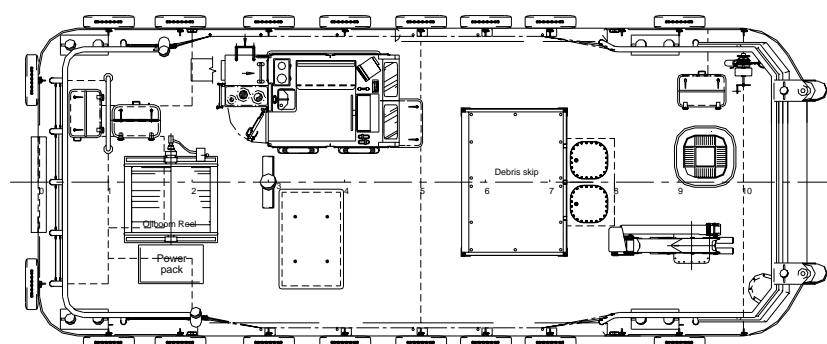
### NAUTICAL AND COMMUNICATION EQUIPMENT

SEARCHLIGHT	Den Haan 170 W
RADAR	Furuno 1832
COMPASS	Cassens & Plath magnetic Kotter type
VHF RADIO TELEPHONE	Sailor RT2048, 25W
GPS	Furuno GP-32
ECHOSOUNDER	Furuno LS-6100

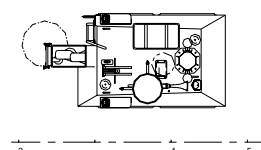
**DAMEN**



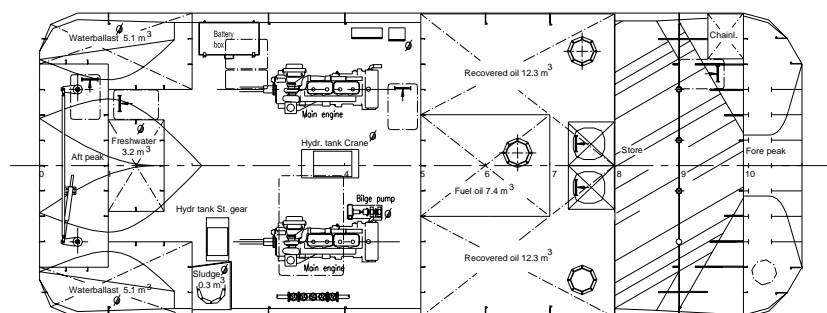
Maindeck



Topdeck



Below Maindeck



# DAMEN MULTI CAT<sup>®</sup> 1506

"ARUS"

**DAMEN**

DAMEN SHIPYARDS GORINCHEM

Member of the DAMEN SHIPYARDS GROUP



Industrieterrein Avelingen West 20  
4202 MS Gorinchem

P.O. Box 1  
4200 AA Gorinchem  
The Netherlands

phone +31 (0)183 63 99 11  
fax +31 (0)183 63 21 89

info@damen.nl  
www.damen.nl